



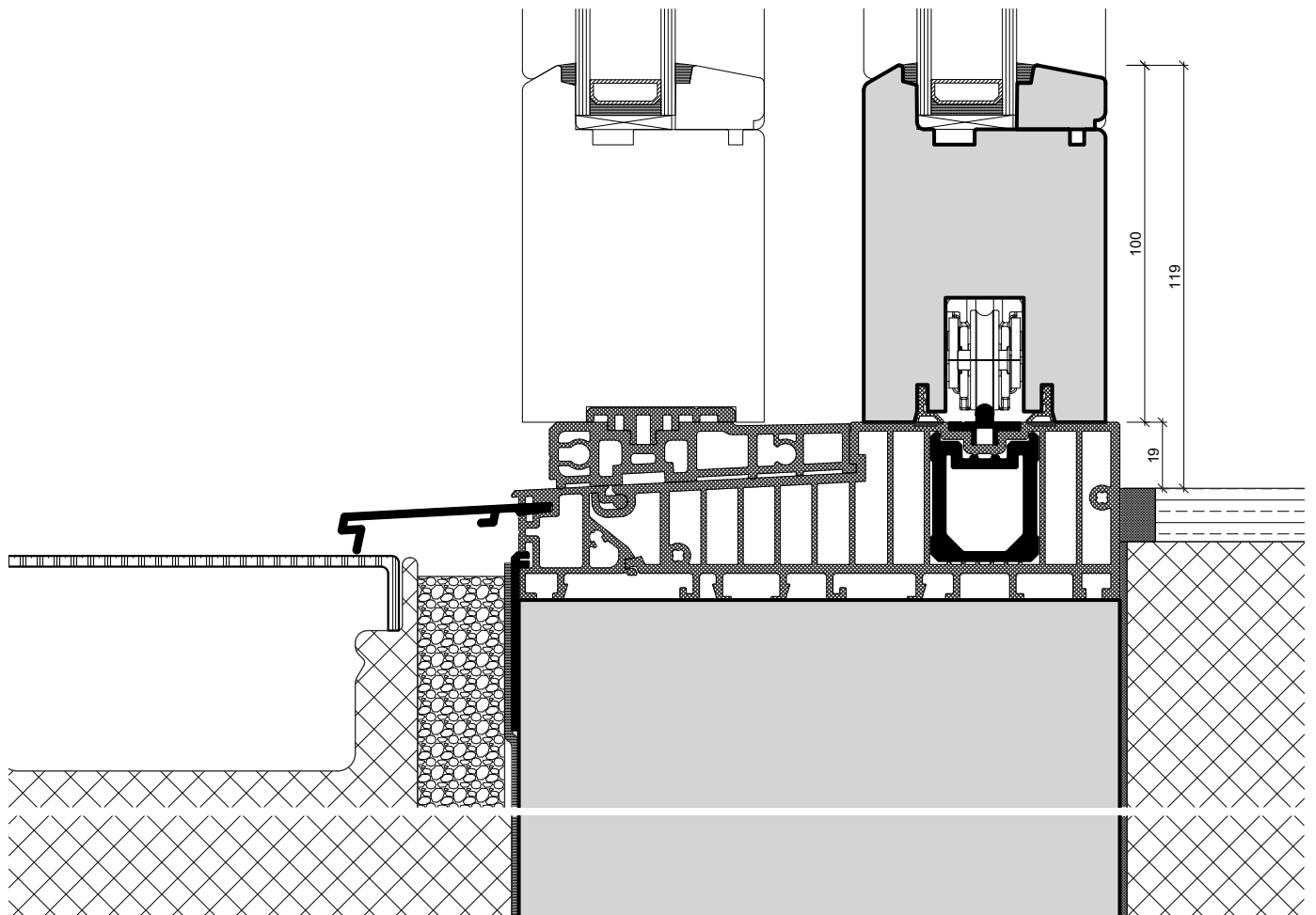
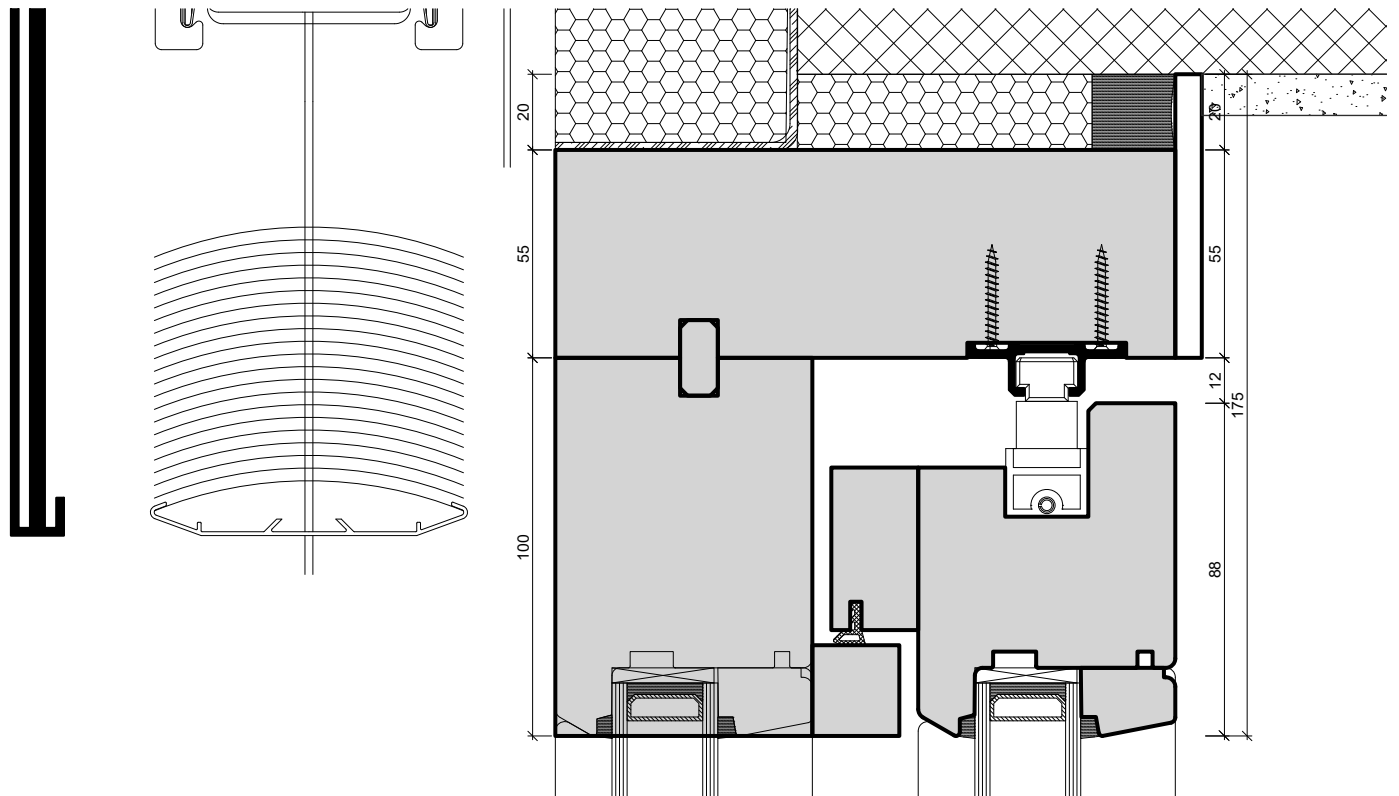
Schwandstrasse 18

6315 Alosen

Telefon: 041 750 64 00

Fax: 041 750 40 94

Mail: info@fenster-nussbaumer.ch





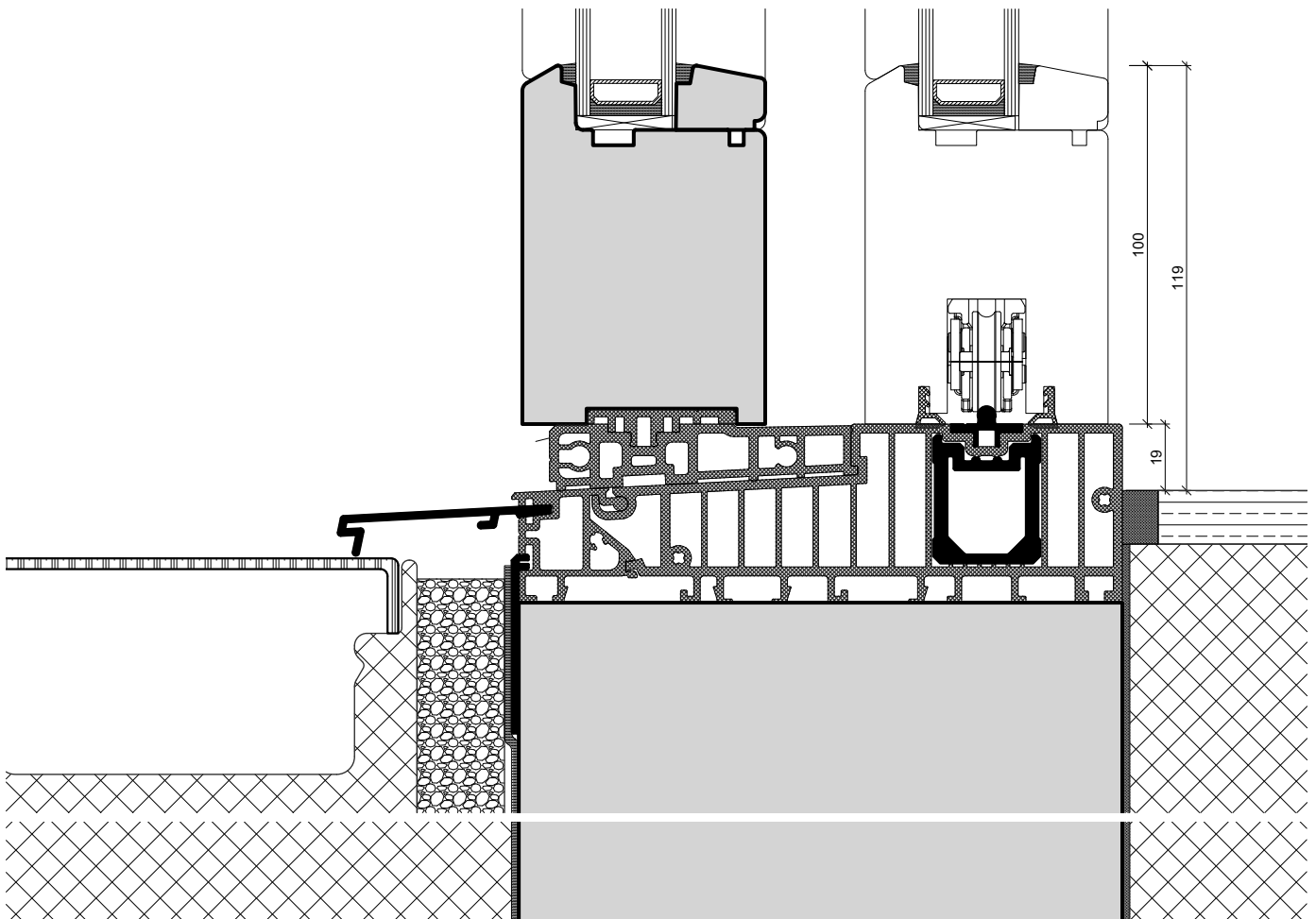
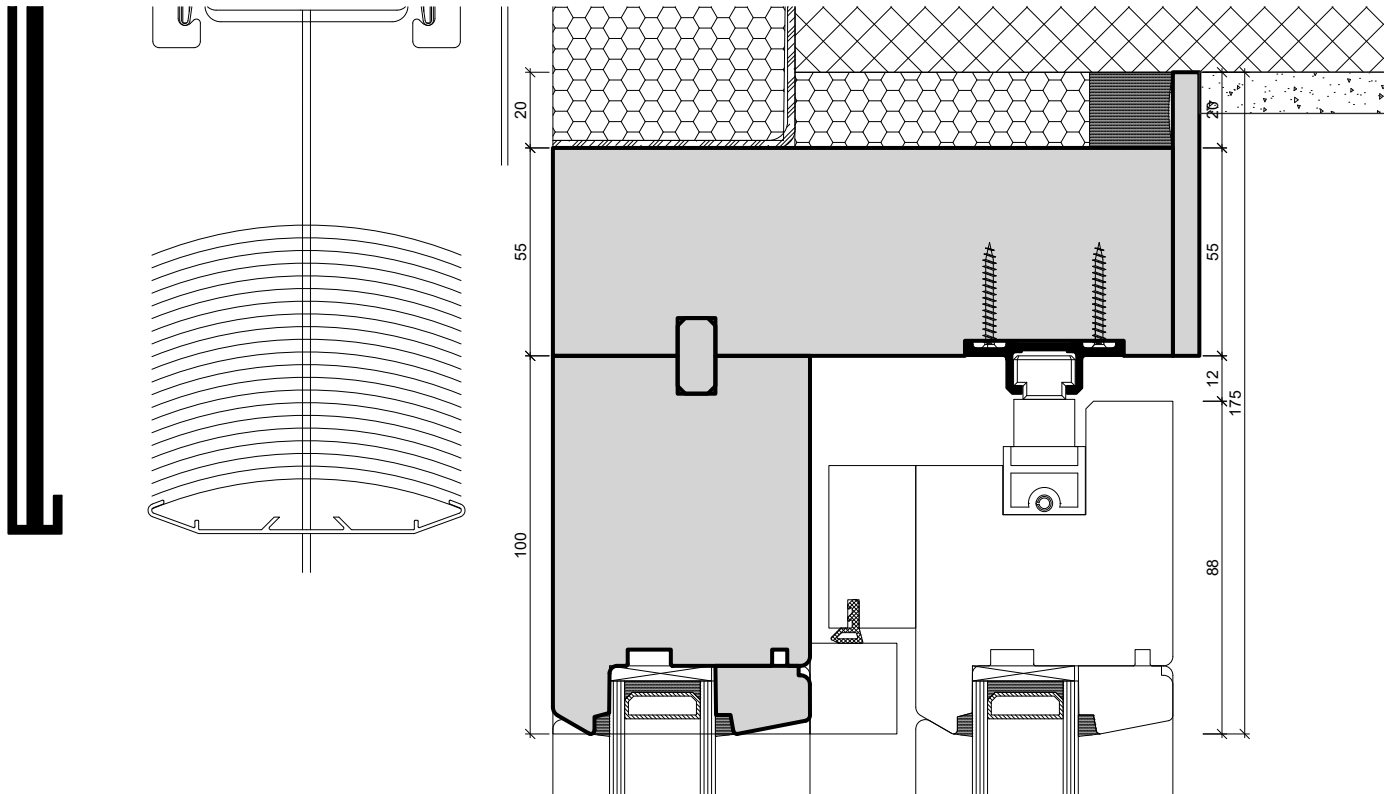
Schwandstrasse 18

6315 Alosen

Telefon: 041 750 64 00

Fax: 041 750 40 94

Mail: info@fenster-nussbaumer.ch



Holz-Fenster Hebschiebetür

Horizontalschnitt

Zeich. 301-401-302

Mst. 1:2

HST IV 68

Datum 30.11.2010

Nussbaumer Fensterbau AG

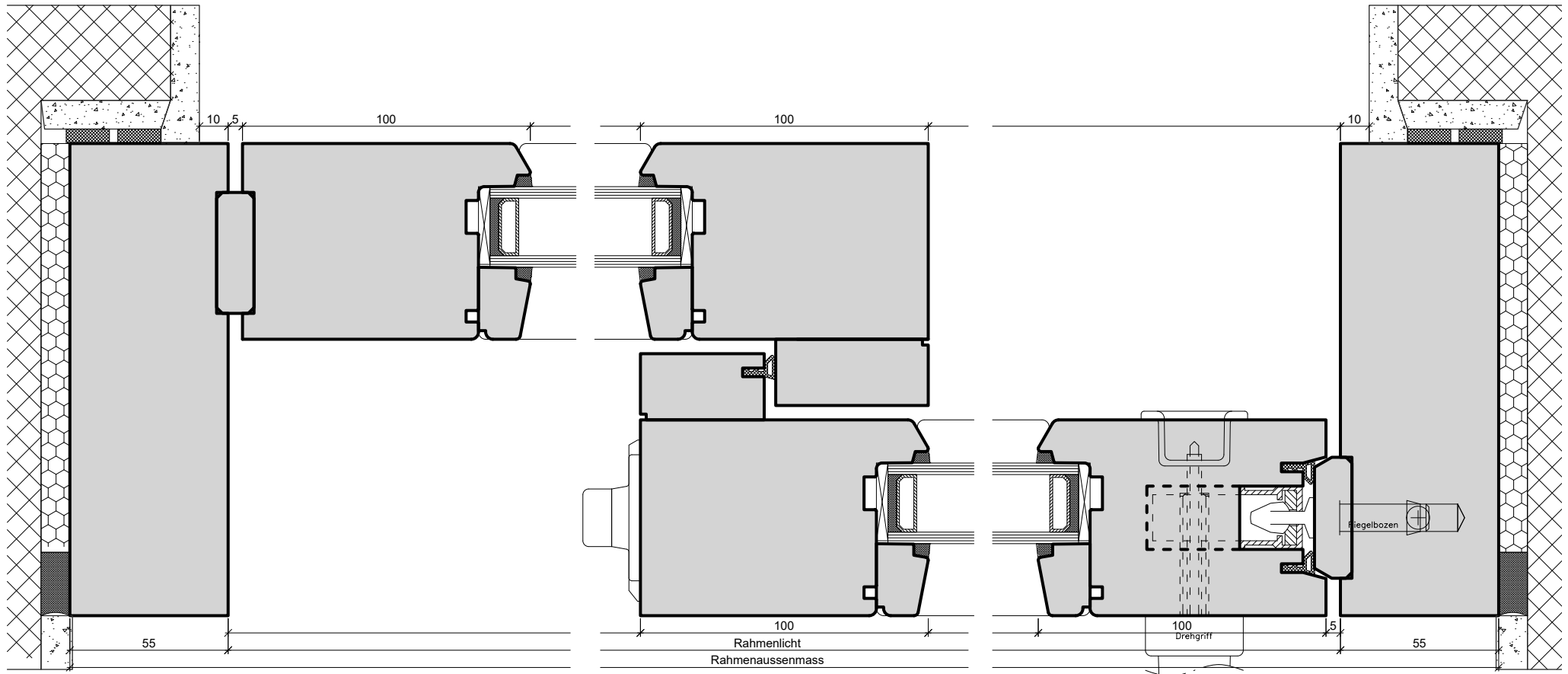
Schwandstrasse 18

6315 Alosen






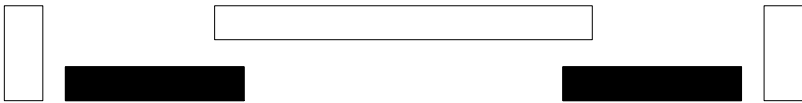
Telefon: 041 750 64 00

Fax: 041 750 40 95

Mail: info@fenster-nussbaumer.ch





Grundriss	Schema
	A
	D
	G1/G2
	C
	F
	K